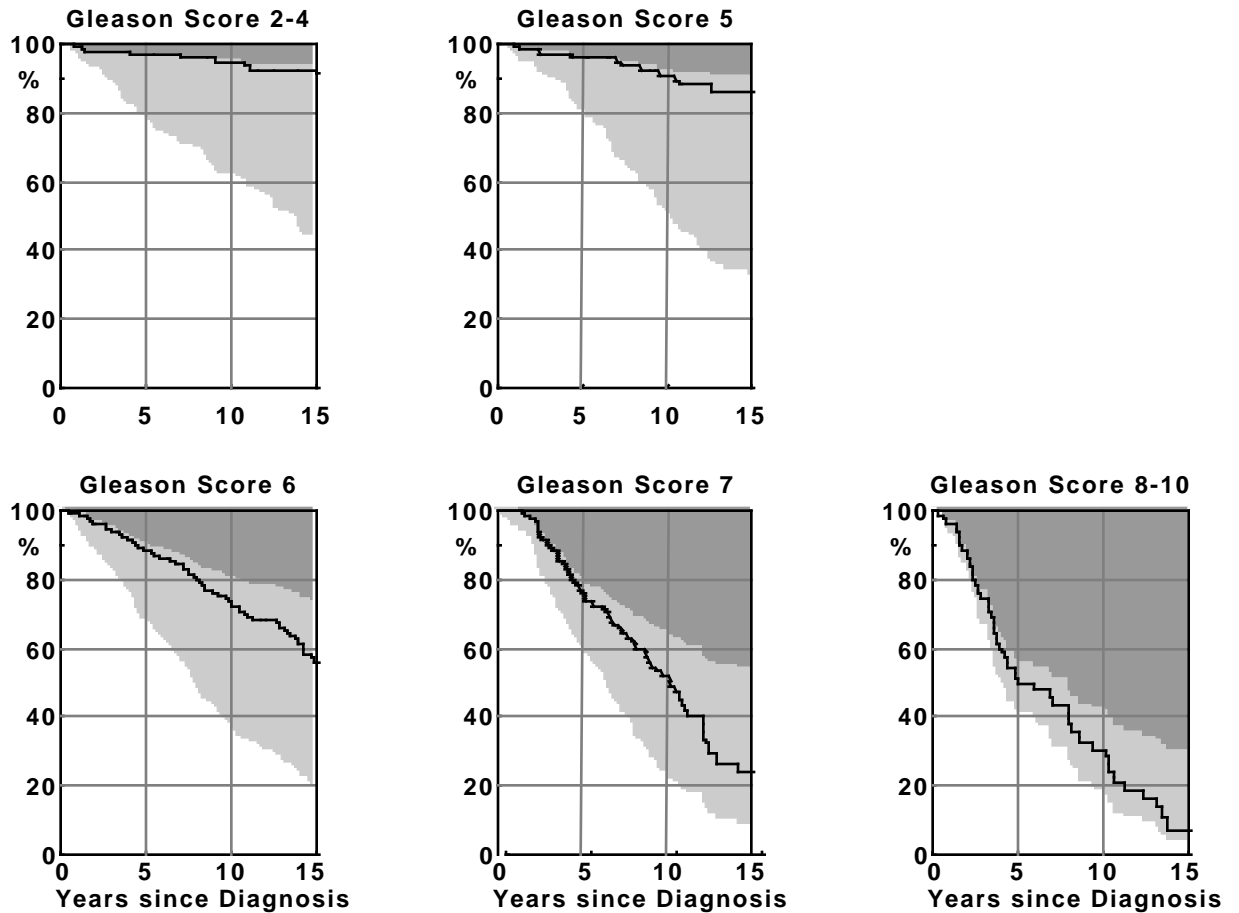


Survival (white lower band) and cumulative mortality from prostate cancer (darker upper band) and other causes (gray middle band) up to 15 years after diagnosis stratified by Gleason score (row).

Cause-specific survival curve (black line) over-estimates cancer mortality.



Cause-Specific Survival Curves “censor” patients who die of other causes ... In effect, this method “resurrects” these men and subjects them AGAIN to the risk of a prostate cancer death from the time of “censoring” onwards. So, Cause-Specific survival curves over-estimate cancer mortality.